

Investing in Marquette County Youth with 4-H

According to research completed by the Institute for Applied Research in Youth Development at Tufts University-

4-H'ers are **4x** more likely to make contributions to their communities, **2x** more likely to be civically active, and **2x** more likely to make healthier choices.

At right : 4-H Club Leader, Susan Korpi, teaching youth

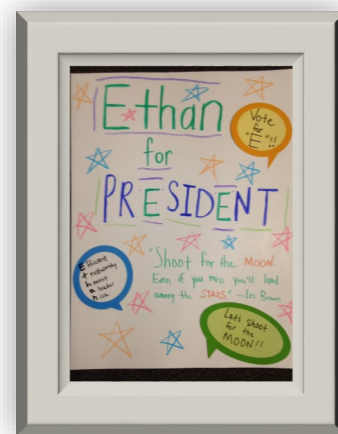


The 2nd Annual Livestock workshop was held on June 8th at the Marquette County Fairgrounds. MSU Extension Staff, Dave Radloff and Melissa Elischer, presented information about marketing their livestock projects, large animal care and well-being, as well as veterinary ethics. 4-H volunteers, presented on care and well-being, and showmanship of rabbits and chickens, as well as horse care and preparation for a horse show. Rabbits, chickens, and horses were on-site, providing youth with **hands-on learning** and practice in animal care and showmanship. **Twenty-six youth and 16 parents** participated. The younger youth felt they had gained new skills with regard to all the classes they participated in- we have several youth who were too timid to show rabbits and chickens last year that feel better prepared and want to try this year.

In the 2017-18 4-H year, **Marquette County had 98 4-H volunteers, 206 4-H members**, including 14 teen volunteers, enrolled in the program. In addition, **2,094 youth ages 5-19** participated in learning opportunities with MSU Extension, including 4-H fun through **summer day camps** and **school enrichment programming** such as the Chinese **Children's Art Exchange**, **Natural Resources** and **Outdoor Recreation**.

F.A.S.T 4-H Club met two Fridays per month through May of 2018. As a homeschool group, they provided many fun classes for their **53 members**, including **cooking, sewing, dissection, and a teen leadership class** for their oldest youth. This leadership class was taught by 4-H project leader, Michelle Taylor, and 4-H program coordinator, Liana Graves. The **17 participants** learned about parliamentary procedure and **running**

The F.A.S.T 4-H Club teen leadership class held officer elections. Participants who wanted to hold a **leadership position** created promotional materials and gave a speech in front of the class. A ballot election was held for club officers



MICHIGAN STATE UNIVERSITY | Extension

MSU is an affirmative-action, equal-opportunity employer, committed to achieving excellence through a diverse workforce and inclusive culture that encourages all people to reach their full potential. Michigan State University Extension programs and materials are open to all without regard to race, color, national origin, gender, gender identity, religion, age, height, weight, disability, political beliefs, sexual orientation, marital status, family status or veteran status. Issued in furtherance of MSU Extension work, acts of May 8 and June 30, 1914, in cooperation with the U.S. Department of Agriculture. Jeffrey W. Dwyer, Director, MSU Extension, East Lansing, MI 48824. This information is for educational purposes only. Reference to commercial products or trade names does not imply endorsement by MSU Extension or bias against those not mentioned. The 4-H Name and Emblem have special protections from Congress, protected by code 18 USC 707.



Marquette County 2018 ANNUAL REPORT

BY THE NUMBERS

100 Over 100 years of serving Marquette County

\$ \$9,640,336 total economic impact in Marquette County

4-H 2,094 youth in 4-H and other youth development programs

52 Extension professionals providing education, 6 based in the county

4,942 MSU Extension website received 4,942 visits, 78% first-time visitors

\$2,267,755 MSU disbursed \$2,267,755 in financial aid to county students; 112 students enrolled

\$1,416,411 spending with local businesses

MESSAGE FROM THE DISTRICT DIRECTOR

I'm delighted to share the results of another successful year of partnership between Marquette County and Michigan State University (MSU) Extension. Because of your continued support, we've been able to make a difference in the lives of youth, families, businesses and communities.



MSU Extension offers a broad range of research-based educational services to county residents. Over this past year, we've empowered families and individuals to live healthier lives, supported new and local businesses, created opportunities for youth leadership development and career exploration, helped farmers with business management and mental health, and much more. Our staff live and work alongside county residents, are rooted in community relationships and are responsive to community needs.

This year, we've also welcomed Marquette County residents into our online community: we've offered online educational courses, answered questions on topics ranging from gardening to food safety, raised program awareness through social media and provided a library of research-based resources they've browsed on our website.

Our partnership with you makes this all possible. On behalf of the MSU Extension team serving Marquette County, thank you for another great year. We look forward to your continued support and hope you'll be able to join us during one of our upcoming programs.

Erin Carter, District Director

CONTACT

MSU Extension Marquette Co
184 U.S. Hwy. 41 East
Negaunee, MI 49866
906-475-5731

msue.anr.msu.edu
marquettecounty@msu.edu

[f](#) MSU Extension Upper Peninsula

[@MSUEExtension](#)

MICHIGAN STATE UNIVERSITY | Extension

Program Highlights



Advanced Extension Master Gardener, Jan Peck, trained also as a Smart Gardener Outreach Volunteer, provides MSUE's Smart Gardening resources to the public. Photo credit: Rebecca Krans, MSU Extension.



Marquette Area Climate and Health Adaptation Project and it is being led locally by Senior Extension Educator, Brad Neumann, AICP.



MSU Extension works to teach citizens how to implement best practices in good governance that keeps communities solvent, productive and engaged.

Marquette Master Gardeners

Nineteen **Extension Master Gardeners** and trainees from Marquette County provided over **1,400 volunteer hours** in 2018. Along with miles traveled, this amounts to over **\$37,000 donated** to educating communities about proper gardening techniques. Extension Master Gardener projects focus around Smart Gardening outreach, beautification, youth gardening, food and community gardening.

Marquette Master Gardeners will have an opportunity to attend the Master Gardener college at Michigan State University in June of 2020 to receive continued training to impact Marquette

Community Development

Since June 2017, local governments, agencies, and community members in Marquette County have been engaged in a project with the goal of reducing human health impacts resulting from climate change. The project is being coordinated by Michigan State University (MSU) Extension and **School of Planning, Design and Construction**, in collaboration with the **Michigan Department of Health and Human Services (DHHS), Marquette County Health Department, Marquette County Climate Adaptation Task Force, and the Superior Watershed Partnership**. The project is called the **Marquette Area Climate and Health Adaptation Project** and it is being led locally by Senior Extension educator, Brad Neumann, AICP.

To date, stakeholders have explored how climate-driven events, such as flooding, water shortage, wildfire, extreme cold, along with extreme weather events have impacted property, quality of life, and human health. These events **impact** certain groups in **Marquette County the hardest**; particularly vulnerable groups are the socially isolated, the elderly, and those living in poverty. Project team members have also developed a host of recommended policy, planning, and infrastructure interventions to address the interaction between climate change, health, and the built environment. The **Marquette Area Climate and Health Adaptation Guide** (Volumes 1 and 2) present example changes to the built environment addressing the community's climate-related public health concerns and highlights policies concerning human health, access to resources, and the built environ-

Program Highlights

MSU Ballot Proposal Education Program

In 2018, Michigan voters faced three statewide ballot proposals. Across the breadth of Extension programming, a common theme is helping individuals make more informed decisions for their communities and **supporting participation and engagement in public policy development**. Education on statewide ballot proposals provides another opportunity for Extension to fulfill this mission. Extension is meeting a need in public policy education by providing valuable education on ballot proposals, helping voters be more confident in their ability to make an informed choice, and thereby inducing greater participation in public elections.

Extension's trusted reputation in communities across the state as a neutral, non-political voice makes this program an ideal messenger to educate voters on public policy issues.

Ballot proposal education was done in two primary ways in 2018. First, written summary analysis was published on each of the three questions on the ballot. The summaries provide simple explanations of the potential impacts of each proposal as well as discussion of some of the key factors related to each topic and reasons people might support or oppose the proposals. Forums were also held on campus and broadcast to remote locations across the state, hosted by MSU Extension educators. Seven participants attended the forum hosted by a MSU Extension educator in Marquette County, which was located at Northern Michigan University.

Marquette County Staff



Brad Neumann, Government and Community Vitality Educator
neuman36@msu.edu



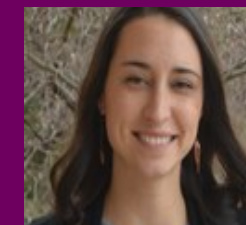
Brian Wibby, 4-H Youth Development Educator
wibby@msu.edu



Liana Graves, 4-H Youth Development Educator
deisenro@msu.edu



Ron Kinnunen, Sea Grant Educator
kinnune1@msu.edu



Carlee Wasik, Program Instructor, Falls Prevention
wasikcar@msu.edu



Bree Carlson, Nutrition Educator
bree@msu.edu



Ashlyn Jendro, Outreach for Veterans
jendroas@msu.edu



Desi Mims, AmeriCorps Member
mimsanth@msu.edu

Program Highlights



2018 Capitol Experience U.P. Delegation.



Extension Specialist, Melissa Elischer, presenting on animal care and well-being and veterinary ethics



Capitol Experience

Capitol Experience is an annual four-day conference preparing **youth** for **active citizenship** by focusing on **civic engagement** and **public policy**.

Youth all over Michigan converge on Lansing to experience state government in action learning how they can influence policy issues. Participants also interact with legislators, state agency staff, lobbyists and other resource people to learn how policy is made.

Youth from Marquette County participate in this state-level event annually, and in **2018 Marquette County youth Guinevere Himes** attended the program. Post-event evaluations revealed **statistically significant gains in youth's civic participation, leadership, and facilitation skills**. Youth also reported feeling **more comfortable** and **confident** in their ability to **communicate**

Rising Lake Levels

Michigan Sea Grant, in conjunction with the **U.S. Army Corp of Engineers** hosted an informational meeting on **rising lake levels on 2018 in Marquette**. Ron Kinnunen, Sea Grant Educator, hosted the event. Approximately **40 property owners** and others interested in Lake Superior water levels attended.

This event was held due to **Lake Superior breaking new records for high water levels** in May, June and July likely causing property and structures along the shoreline to sustain damage during storms. Participants interested in shore protection devices were provided with information on proper permitting for these types of structures.

Information was given concerning **forecasted lake level change**. Additionally, MDEQ and U.S. Army Corp of Engineering personnel were present to answer questions on shoreline structure permitting.

Program Highlights

Community Development continued.

In January 2019, local leaders were again engaged in the project through a facilitated workshop of setting priorities, identifying supporting organizations, and establishing timelines for implementation at the Marquette Township Hall. In this third year of the project, the goals are to continue to build a local network of collaboration on resiliency initiatives, explore opportunities for technical assistance implementing some of the policy recommendations and explore the development of a demonstration project in the county using recommendations in the Guide.

Supporting Health and Wellness in Marquette County

SPartners for Health is a school web based nutrition and physical activity program to promote health in 5th grade students and their caregivers. 2018 completed the second year of three UP public universities' (**Michigan Technological University, Northern Michigan University, & Lake Superior State University**) collaboration on this academic service learning and applied research project through Michigan State University (MSU) Extension. Educational programming, pre/post measurement and healthy school curriculum intervention were integrated into the three universities, their local schools, and the communities.

This project is in partnership with **UPHP, Marquette Food Co-op, MSU Extension's Upper Peninsula Research and Extension Center** and was made possible through generous funding from the **Superior Health Foundation and Blue Cross Blue Shield of Michigan**.

University health and education students were **certified in mentorship** and administering **extensive pediatric cardiovascular risk assessment profile including a lipid panel, blood pressure, biometrics and evaluation**. The university students used pre/post surveys for evaluation measures, delivered six academic service learning lessons, which coincided with each lesson to caregivers of the fifth grade students in Houghton, Marquette, and Chippewa counties. Each health lesson uses online goal setting, tracking and mentorship by the team of trained university students.



F.A.S.T. 4-H Club teen leadership class learning about teamwork through tower building using only toothpicks and marshmallows



SPartners at Cherry Creek Elementary with Jim LaJoie, Executive Director of the Superior Health Foundation.



Extension Educator, Dave Radloff, presenting on marketing a livestock project